

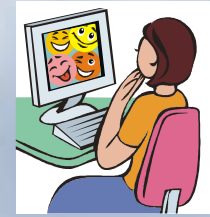
## Refir



Það eru fleiri en  
íslenskt mannfólk  
sem borða ber.

Refir á ströndum  
borða nær eingöngu  
ber í tvo mánuði á haustin  
og einn mánuð að vori.  
Refir eru með langt loðið skott  
og stutt eyru.

## Vefverkefni



Veldu mynd og skrifaðu texta.



Prentaðu út og límdu í bók.

<http://www1.nams.is/landspendyr/animal.php?id=4>

<http://www.husdyragardur.is/vilttdyr/refir/>

<http://www.tofragardurinn.is/?q=node/29>

<http://www.vesturferdir.is/index.php?k=3&s=myndir&cat=36&lang=is>

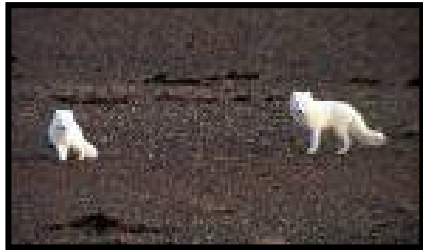


**Sýna:** tengja mynd við orð

Þetta er yrðlingur



Hér er hvít tófa með yrðling.



Refir að slást



Refurinn er grimmur.

**Prófa:** skrifa án forskriftar

---

---

---

---

---

---

---

---

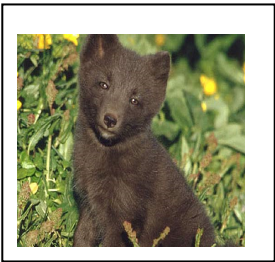
---

---

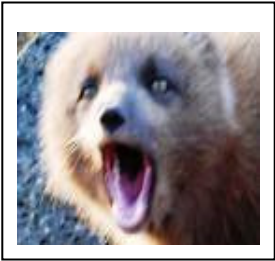
Sýna: tengja mynd við orð



refur



tófa



yrðlingur

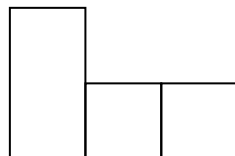
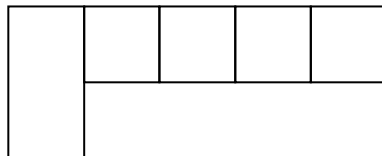
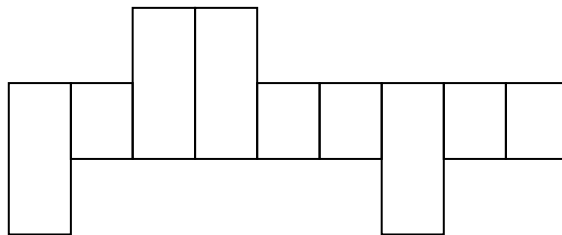
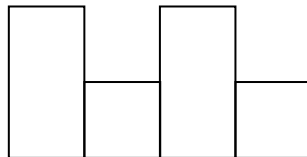
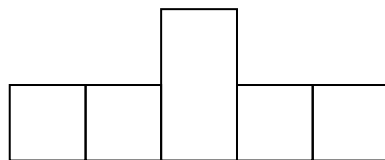


greni



ber

Leiða: skrifa í kassa



Prófa: skrifa án forskriftar

---

---

---

---

---